

InGRID-2 - Integrating RI for European Expertise on Inclusive Growth from Data to Policy

InGRID-2 infrastructures, current state of play and plans

Roundtable on “Main Gaps in Research Infrastructures in Central-Eastern Europe”

Bratislava, 7-8 March 2019



What is a European Research Infrastructure?

HELPING HANDS – FACILITATING RESEARCH

Research infrastructure

= facility or platform that provides resources and services to the scientific community to conduct research

- support researchers to access, order, analyse, store and reuse data and knowledge in ways otherwise impossible
- foster innovation and excellence in scientific research
- pooling efforts



The InGRID Research Infrastructure

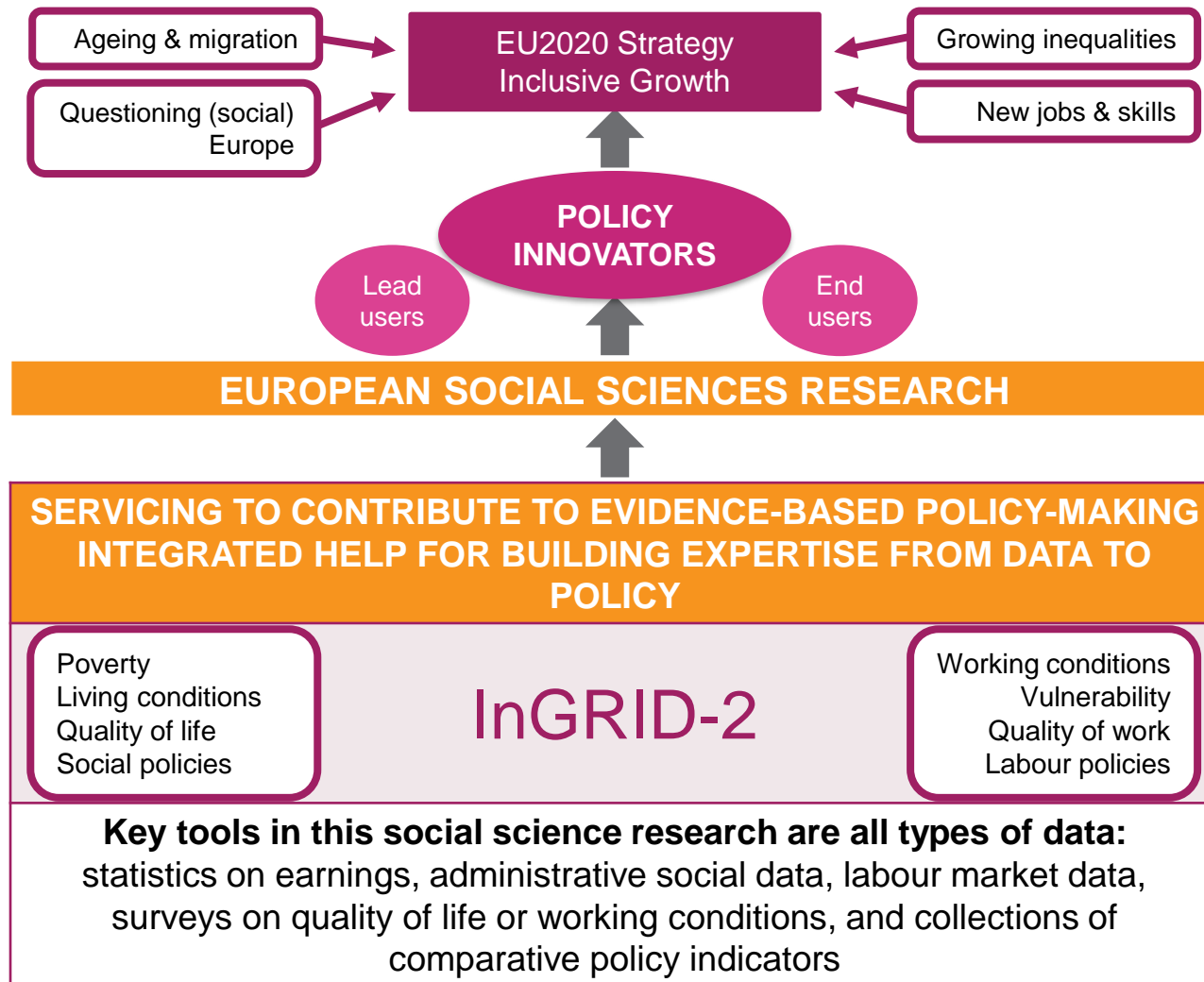
Inclusive **G**rowth **R**esearch **I**nfrastructure **D**iffusion

→ Integrating and opening existing national RIs of pan-European interest:

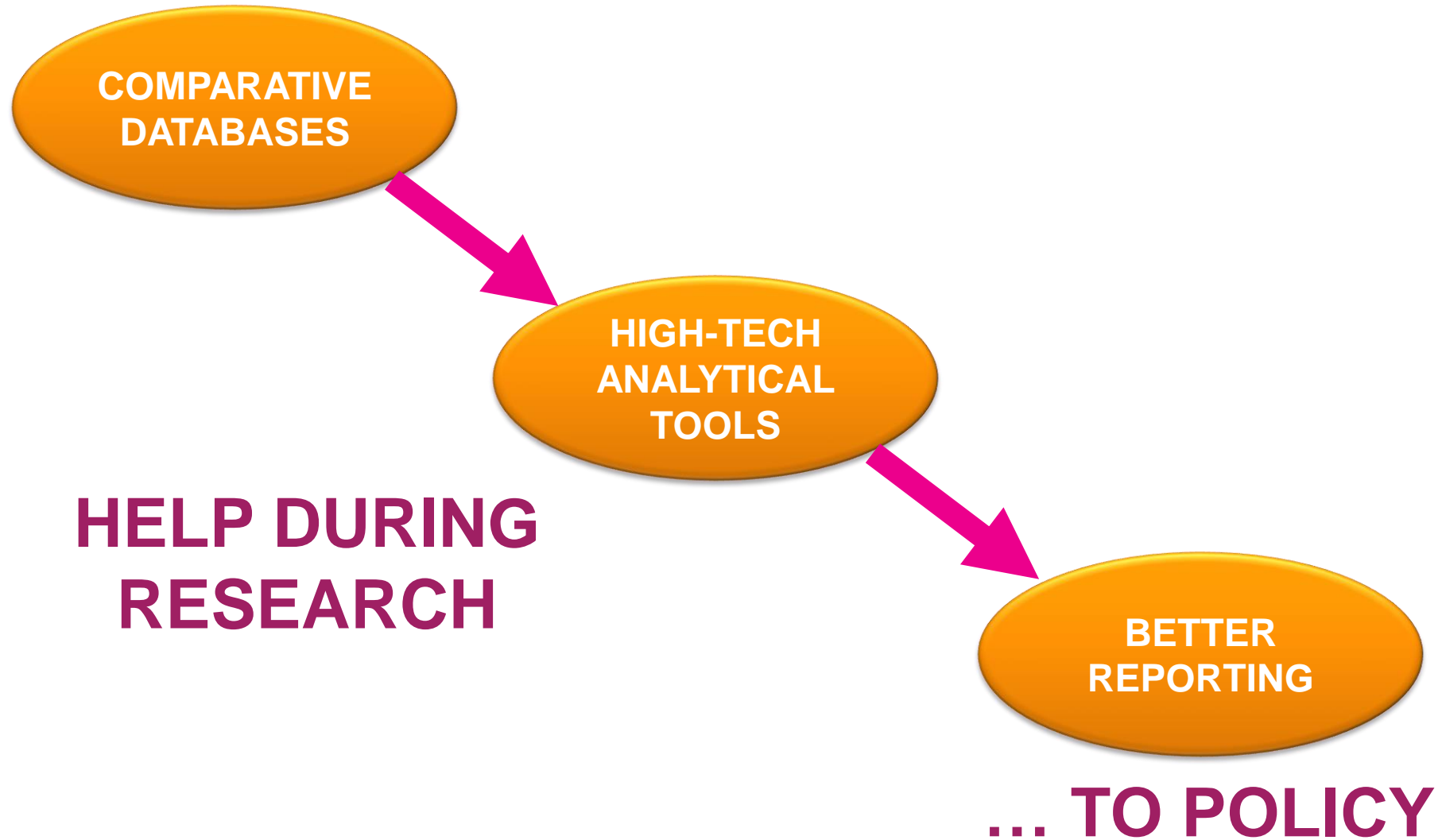
- Open up key national RIs to all European researchers and ensure their optimal use and joint development
- Support “European RIs Networks” bringing together infrastructures in a given field
- Knowledge transfer: facilitate research with policy impact

Why do we focus on inclusive growth?

- **Inclusive growth** is considered a **major societal challenge** and the issue is at **the heart of the debate on the future of the EU**, after the crisis
- Next to the national level, the EU policy level is increasingly regarded as **key lever to address societal issues**:
 - **EUROPE 2020**: Agenda for smart, sustainable and inclusive growth
 - Employment
 - R&D
 - Climate Change & Energy
 - Education
 - Poverty & Social Exclusion
 - **EPSR**: Delivering new and more effective rights for citizens
 - Equal opportunities and access to the labour market
 - Fair working conditions
 - Social protection and inclusion
- **Monitor progress** → Data, Methods, Indicators!



FROM DATA ...



InGRID-2 Research Infrastructures

DATA

METHODS

INDICATORS

Integrated comparative data

Facts on situation:

- Household microdata (LIS)
- Integrated European Census Microdata (IECM-CED)
- WageIndicator (AIAS, CELSI)
- National best practices (UEssex, TÁRKI, CNAM, DIW)

Policy (indicator) databases:

- Comparative social policy databases (SOFI)
- CSB-MIPI (UA)
- ICTWSS (AIAS)
- IPOLIS (TÁRKI)

Methodological tools

European surveys:

- EU-SILC, EU-LFS (AISSR, LISER, TÁRKI, UA)
- Eurofound (HIVA, CNAM)

Meadow format for linked employer-employee surveys (CNAM)

WISCO classification (AIAS)

EUROMOD (UA, UEssex)

Advanced statistical methods:

- Amelia synthetic dataset (UTrier)
- Dynamic micro-simulation (LISER)

Indicator-building

- Job quality (HIVA, CNAM)
- Poverty (TÁRKI, HIVA, LISER)
- Social policy (UA, SOFI, LISER)
- Statistical quality techniques (UTrier, UNIPI, SOTON)

Target Groups

- **Lead users: Social scientists**
 - Research on poverty and living conditions, working conditions and vulnerability, ‘inclusive/social Europe’
 - Comparative research providing evidence for policy
- **End users: Policy innovators**
 - European/national – politics, administration, civil society
- **Pre-users: Data providers**
 - European agencies; statistical bureaus; international and national data initiatives of European interest

Three types of activities

- **Joint research activities:**
 - Innovative JRA to enhance and enrich the technical quality of the RI, focused on improving data integration and harmonisation, upgrading analytical tools and making progress in indicator-building
- **Transnational and virtual access:**
 - Provide convenient and harmonised TNA to the RI based on unified and integrated grant system with required open selection procedures
 - Both on-site and virtual access
- **Networking activities:**
 - Knowledge exchange activities: mutual learning
 - Innovation networking activities: stimulate innovation within and beyond RI, connect to broader networks

Joint research activities – 2 pillars

Poverty & Living Conditions

Data integration & harmonisation (situation & policy)

Evaluation & analysis tools (simulation)

Indicator-building (visualisation, policy innovation)

Working Conditions & Vulnerability

Data integration & harmonisation (situation & policy)

Evaluation & analysis tools (simulation)

Indicator-building (visualisation, policy innovation)

How the pillar activities are contributing to the ambition of inclusive growth

Existing RIs & Gaps

Existing RIs:

- EU-wide surveys (LFS, SILC)
- Microsimulation (EUROMOD)

Gaps:

- Historical and longitudinal data
- Inclusion hard-to-reach-groups
- Contextual data
- Regional and local data
- Big data, new types of data
- Comparative, causal analyses
- Precise and valid indicators

Selected tasks

- Extension of IPOLIS, EUROMOD
- Harmonisation of longitudinal data on educational careers
- Combining data tools for dynamic microsimulation
- Conceptualisation, measurement of out-of-work benefits
- Integrating data on welfare services
- Small area estimation techniques and regional poverty measurement
- Indicator protocols on migrants' social rights
- Demographic factors and poverty indicators



Poverty
Living conditions
Social policies

Data
Methods
Indicators



How the pillar activities are contributing to the ambition of inclusive growth

Existing RIs & GAPS

Existing RIs:

- EU-wide surveys (EWCS, ECS)
- Linked employer-employee data, national organisation, employee and working conditions surveys
- WageIndicator, ICTWSS, WISCO

Gaps:

- Data are dispersed, lack of data harmonisation and integration
- Identification vulnerable groups
- Meso-level data
- Big data, new types of data
- Comparative analyses
- Need for policy indicators

Selected tasks

- Harmonisation/integration data on CB and minimum wages; WC data on vulnerable groups
- New types of (web)data and its use
- Historical data of the EU-LFS
- New methods to examine hiring practices and skill transferability
- Methods for new jobs and skills
- Exploration of microsimulation approaches for comparative WC research
- Multidimensional vulnerable group indicators
- Policy indicators OSH
- Indicators to assess progress WC



Working conditions
Vulnerability
Labour policies

Data
Methods
Indicators



InGRID-2 Transnational access (TNA)

- **Advancing TNA is a key objective of InGRID-2**
 - # visits +25%, virtual access, new facilities
- **Access to 16 European research infrastructures**
 - **Who can apply?**
 - Early-stage or expert researchers
 - Employed in EU Member States & associated countries
 - **What is offered?**
 - Work together on data between 5 and 15 days
 - Free-of-charge
 - Reimbursement travel costs & subsistence allowance
 - Individual or in group
 - (linked to attending summer school or expert workshop)
 - **How to apply?**
 - Call every 4 months; see website

InGRID-2 Virtual access (VA)

VA LIS

- 2 international comparable databases: Luxembourg Income Study (LIS) and Luxembourg Wealth Study (LWS)
- Previously: only financially contributing members (8 countries) have free and unlimited access
- **Aim:** provide VA to EU researchers coming from other countries
- **How:** remote-execution system:
 - VA to two LIS and LWS,
 - Detailed documentation,
 - Training materials,
 - User support

VA Essex

- EUROMOD = tax-benefit microsimulation model for EU, growing number of users
- Previously: open access model; but users request access; receive username + password; download latest version of EUROMOD, plus the input data requested
- **Aim:** provide an online version without entry barriers

InGRID-2 Networking activities

Knowledge exchange networking

- Summer school training activities (WP4)
- Expert network programme of workshops (WP5)

Strategic innovation networking

- Innovation network activities (WP6)
- Strategic advancement of RI (WP7)

Knowledge exchange networking activities

- **Summer schools & MOOCs:**
 - for early-stage researchers and policy practitioners/experts
 - on conceptual and methodological issues and working with EUROMOD
 - key notes lectures, hands-on exercises, attendants can present their own work
 - MOOCs: being prepared
- **Expert workshops:**
 - targeted at senior researchers and other experts
 - identify and discuss key technical issues and possible solutions

Strategic innovation networking activities

- **Data forums:**
 - reach out to data providers, research-users and stakeholders
 - discuss challenges of particular data types and suitable actions to answer them
 - topics: data on household finances, census data, WageIndicator web survey data, national working conditions surveys
- **Special interest groups:**
 - a specific community within the InGRID-2 community-of-interest
 - aimed at advancing specific methodological area (e.g. microsimulation)
- **Stakeholder platform conferences:**
 - bilateral meetings and conference with relevant networks to discuss synergies and options for joint development efforts

Strategic innovation networking activities

- **Experts-in-residence:**

- ‘In to out’: research visits of InGRID-2 experts at international organisations such as ILO and OECD, aimed at facilitating co-operation and synergies
- ‘Out to in’: thematic conference with and visits of senior experts of the newest EU MS, to familiarise with the RI, and scan possibilities of associating partners

- **Roundtables:**

- enlarge the RI distributed network to all EU countries, paying particular attention to Central and Southeastern Europe (see InGRID-1 delphi survey)
- support on-going strategic developmental processes in these regions
- organisation of roundtables on (gaps in) research infrastructures

SNEAK
PEEK

Supporting expertise in inclusive growth

Start looking for information



Datasets

Lorem ipsum dolor sit amet, consectetur adipiscing elit.



Analytical tools

Lorem ipsum dolor sit amet, consectetur adipiscing elit.



Indicators & statistics

Lorem ipsum dolor sit amet, consectetur adipiscing elit.



National data archives

Lorem ipsum dolor sit amet, consectetur adipiscing elit.



International repositories

Lorem ipsum dolor sit amet, consectetur adipiscing elit.



Stay informed about InGRID?

Subscribe to our mailing

Your e-mailaddress



HOME

ABOUT INGRID

HOW TO USE THIS PORTAL

OTHER INGRID PLATFORMS

CONTACT

WANT TO HELP INGRID?

Discover our other platforms

IPOLIS

EUROMOD

SPIN

LISER E-PLATFORM

AMELI

Tweets by @ingrid



InGRID
@InGrid



Lorem ipsum dolor sit amet, consectetur adipiscing elit.



SNEAK
PEEK

Start looking for information



You're searching the InGRID portal

216 results found

Category

Datasets Analytical tools Indicators & statistics National data archives International repositories

Domain **Region** **Period** **Measurement** **Type of data**

Living conditions Working conditions Poverty Vulnerability

[Delete all filters](#) [Hide all filters](#)

You're filtering on datasets

This portal includes datasets on working conditions & vulnerability and poverty & living conditions.

Clicking on a dataset above will show you general information about it, as well as links to its data and other services.

ILO KILM : ILO Key Indicators of the Labour Market

Datasets

Working conditions | Vulnerability | Poverty

EU-12 | Belgium | Germany +7

Since 2000 | 2017 | 2018 +3

Cross-country | Household level

Textual data

Lorem ipsum dolor sit amet, consectetur adipiscing elit, sed do eiusmod tempor incididunt ut labore et dolore magna aliqua. Ut enim ad minim veniam, quis nostrud ullamco laboris nisi ut aliquip ex ea lorem ipsum dolor sit amet, consectetur adipiscing elit. Lorem ipsum...

19 Partners

Coordinator: HIVA – KU Leuven (BE)

Monique Ramioul, Karolien Lenaerts, Ine Smits, Sandra Volders

UA – CSB – Universiteit Antwerpen (BE)

Local Project Manager: Tim Goedemé

CEPS – Centre for European Policy Studies (BE)

Local Project Manager: Miroslav Beblavý

UNI-TRIER – Economic and social statistics department

Universität Trier (DE)

Local Project Manager: Ralf Münnich

DIW – Deutsches Institut Fur Wirtschaftsforschung (Institut Fur Konjunkturforschung) Ev (DE)

Local Project Manager: Jürgen Schupp

PANTEION – Panteio Panepistimio Koinonikon Kaipolitikon Epistimon (GR)

Local Project Manager: Constantine Dimoulas

CED – Centre d'Etudis Demografics (ES)

Local Project Manager: Albert Esteve Pálos & Teresa Antònia Cusidó Vallverdú

CNAM – Conservatoire National des Arts et Metiers (FR)

Local Project Manager: Nathalie Greenan & Sylvie Hamon-Cholet

TARKI – POLC – Tarsadalomkutatasi Intezet Zrt (HU)

Local Project Manager: István György Tóth

UNIPI – Università di Pisa (IT)

Local Project Manager: Monica Pratesi & Caterina Guisti

LISER – Luxembourg Institute of Socio-Economic Research (LU)

Local Project Manager: Philippe Liégeois

LIS – Luxembourg Income Study, asbl (LU)

Local Project Manager: Thierry Kruten

UvA – AIAS – Universiteit van Amsterdam (NL)

Local Project Manager: Stephanie Steinmetz

CIOP-PIB – Centralny Instytut Ochrony Pracy - Panstwowy Instytut Badawczy (PL)

Local Project Manager: Zofia Pawlowska

SU – SOFI – Stockholms Universitet (SE)

Local Project Manager: Kenneth Nelson

CELSI – Stredoeuropsky Institut Pre Vyskumprace Zdruzenie (SK)

Local Project Manager: Martin Kahanec

UESsex – ISER – University of Essex (UK)

Local Project Manager: Matteo Richiardi & Jack Kneeshaw

SOTON – S3RI – University of Southampton (UK)

Local Project Manager: Nikos Tzavidis

UNIMAN – School of social sciences – University of Manchester (UK)

Local Project Manager: Natalie Shlomo

Thank you!

Co-ordinator

Monique Ramioul



RESEARCH INSTITUTE FOR
WORK AND SOCIETY

Partners

TÁRKI Social Research Institute Inc. (HU)
Amsterdam Institute for Advanced Labour Studies – AIAS, University of Amsterdam (NL)
Swedish Institute for Social Research - SOFI, Stockholm University (SE)
Economic and Social Statistics Department, Trier University (DE)
Centre for Demographic Studies – CED, University Autònoma of Barcelona (ES)
Luxembourg Institute of Socio-Economic Research – LISER (LU)
Herman Deleeck Centre for Social Policy – CSB, University of Antwerp (BE)
Institute for Social and Economic Research - ISER, University of Essex (UK)
German Institute for Economic Research – DIW (DE)
Centre for Employment and Work Studies – CEET, National Conservatory of Arts and Crafts (FR)
Centre for European Policy Studies – CEPS (BE)
Department of Economics and Management, University of Pisa (IT)
Department of Social Statistics and Demography – SOTON, University of Southampton (UK)
Luxembourg Income Study – LIS, asbl (LU)
School of Social Sciences, University of Manchester (UK)
Central European Labour Studies Institute – CELSI (SK)
Panteion University of Social and Political Sciences (GR)
Central Institute for Labour Protection – CIOP, National Research Institute (PL)

InGRID-2

Integrating Research Infrastructure for
European expertise on Inclusive Growth from
data to policy Contract N° 730998

For further information about the InGRID-2
project, please contact
inclusive.growth@kuleuven.be
www.inclusivegrowth.eu
p/a HIVA – Research Institute
for Work and Society
Parkstraat 47 box 5300
3000 Leuven
Belgium